

300 series

Temperature Monitoring eLock with Access Control

((WIRELESS OR ETHERNET READY))



**Temperature monitoring-only
and access control-only units available**

Note: temperature probe cable is longer than shown.
See back page for minimum system requirements.

CompX eLock® eliminates manual temperature logging.

- Prevents human error
- Automatically records temperature at programmed intervals
- Data history is archived and easily accessible

Temperature Monitoring:

- ◆ Utilizes 802.11g wireless protocol or Ethernet communication
- ◆ Escalating notification system sends temperature “out of range” alerts via email, text message, voice call, or fax
- ◆ Audible and visual local alarming at eLock
- ◆ Records up to 500,000 temperature data points and provides programmable charts, graphs and reports
- ◆ Standard temperature range 100°C to -40°C; Ultra low version to -100°C
- ◆ Programming can be done manually on user friendly LCD blue backlit screen or through LockView® software

Access Control:

- ◆ 3,000 users/supervisors codes
- ◆ LockView software provides an Audit Trail of the last 15,000 access attempts; including date, time and user name
- ◆ Four modes of access: Keypad, Proximity card* HID or iCLASS HID, Magstripe card* (Track 2)
**Use existing identification cards*
- ◆ Motor-driven latching mechanism provides the convenience of automatic relocking
- ◆ Complies with Joint Commission standards and is 21 CFR Part 11 compliant

CompX
SECURITY PRODUCTS

Reorder #: F2644-027

Copyright 2013 © CompX Security Products / 847.752.2500 / compx.com / 715 Center St., Grayslake, IL 60030
Any companies and/or products referred to herein are marks or registered trademarks of their respective companies, owners and/or mark holders.

For more information, call **847.752.2500**

LockView SOFTWARE

LockView 4 – sold separately – is easy to use, with many programmable options, and allows access to any eLock from any computer on the network.

LockView® software features:

- ◆ Provides a comprehensive audit trail of the last 15,000 access attempts; including date, time and user name
- ◆ Escalating notification system sends alerts via email; optional Short Message Service provides Text Message, Voice Messaging or Fax alerts
- ◆ Complies with Joint Commission standards and is 21 CFR Part 11 compliant
- ◆ LockView enables updates via the network to any eLock on the system. Updates can include:
 - User changes (Add / Delete / Modify Credentials)
 - eLock Changes (Add / Delete / Modify eLocks)
 - Access Rights changes
- ◆ Allows users to enter notes on actions taken following out-of-temperature range alerts
- ◆ eReports produces and sends customized temperature monitoring reports and access audit logs to designated personnel in either Excel or Rich Text formats. **No need to remember to retrieve temperature data!**

Minimum System Requirements

Windows XP, Vista, 7, Server 2003/2008 Standard and R2

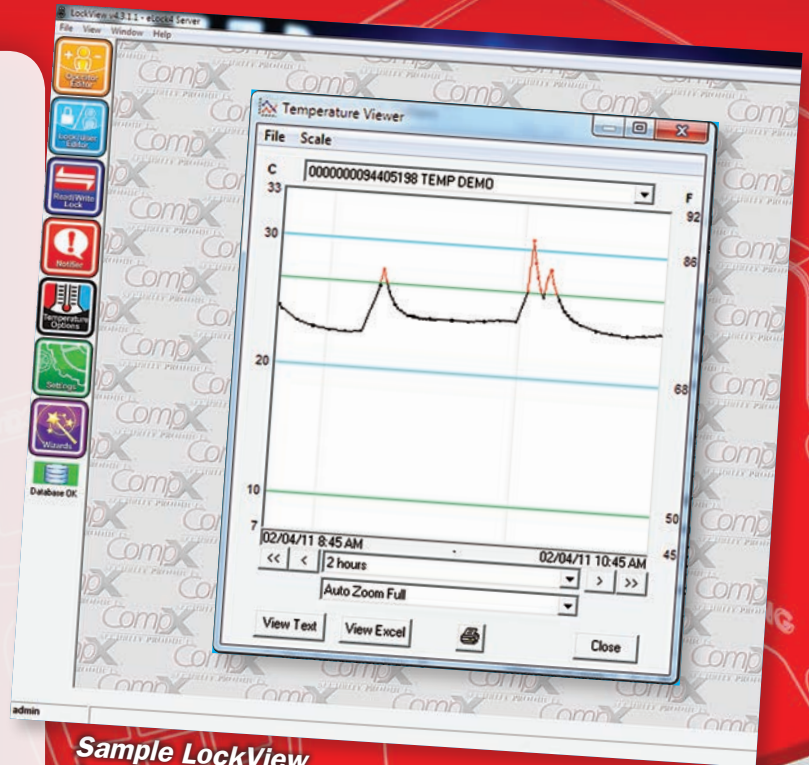
2GB RAM - Pentium III 1.0 GHz or higher (4GB recommended)

2GB Hard drive space

SQL Server or SQL Express 2005/2008 (ODBC connection required to Server)

Client/Server require local administrator rights

.NET 4.0



Sample LockView temperature graph

Device Name	Location	Last Temperature	Last Reading Date/Time	Compliant?	Last Non-compliant Date/Time
6760	PHARM 114-9	36.7 F	05/03/2010 12:46:21PM	YES	Never
6769	OBO 4121SE	35.7 F	05/03/2010 12:53:04PM	YES	Never
6762	OBO 4131SE	37.0 F	05/03/2010 12:59:12PM	YES	Never
6763	CCU 1	41.4 F	05/03/2010 1:04:32PM	YES	Never
6745	PHARM S7-1	35.9 F	05/03/2010 1:12:14PM	YES	Never
6853	OBO 4131SE	39.7 F	05/03/2010 1:18:48PM	YES	Never
6830	BIO ULF4	38.5 F	05/06/2010 7:25:19AM	YES	Never
6860	HOU RM 3	36.3 F	05/06/2010 7:31:10AM	YES	Never
6862	CPOU 3649	36.7 F	05/06/2010 7:38:31AM	YES	Never
6864	CPOU 3650-60	37.0 F	05/06/2010 7:44:40AM	YES	Never
6864	BIO ULF1	37.9 F	05/06/2010 7:51:10AM	YES	Never

Compliance Dashboard provides at-a-glance status of all eLocks on the network



Reorder #: F2644-027

Copyright 2013 © CompX Security Products / 847.752.2500 / compx.com / 715 Center St., Grayslake, IL 60030
Any companies and/or products referred to herein are marks or registered trademarks of their respective companies, owners and/or mark holders.

For more information, call **847.752.2500**