

Thank you for choosing eLock.

CompX eLock®

CompX eLock® is a highly engineered lock with a motor-driven latch. Its uncompromising lock control electronics include a non-volatile memory that stores 250 user / supervisor codes and audit trail. With optional LockView® audit trail software, CompX eLock® remembers 1500 access attempts. Programming is simple with numeric keypad or Windows™ based LockView® software.



Quick Programming Guide

1. GETTING STARTED:

- The unit is shipped with no user / supervisor codes
- Press and hold **#** until the beeping stops
- Input the new PIN (4 digit min) and press **#** or present new card
- This PIN / Card is now a supervisor in slot #001

2. ADD A USER:

- Input a valid supervisor PIN and press **#** or present valid supervisor card
- Press and hold **#** until beeping stops
- Input the new user PIN (4 digit min) and press **#** or present new card

3. ADD A SUPERVISOR:

- Input a valid supervisor PIN and press **#** or present valid supervisor card
- Press and hold **#** until beeping stops
- Press and hold **#** again until beeping stops
- Input new supervisor PIN (4 digit min) and press **#** or present NEW supervisor card

4. DELETE A USER OR SUPERVISOR:

- Input a valid supervisor PIN and press **#** or present valid supervisor card
- Press and hold ***** until beeping stops
- Input the PIN to be deleted and press **#** or present existing card to be deleted

5. ADD A USER WITH A SPECIFIC SLOT ASSIGNMENT:

- Input a valid supervisor PIN and press **#** or present valid supervisor card
- Press and hold **#** until beeping stops
- Enter slot number that will be assigned to user and press **#**
(example: to program slot 6 type 006 **#**)
- Input the new user PIN (4 digit min) and press **#** or present NEW card

6. DELETE A USER WITH A SPECIFIC SLOT ASSIGNMENT:

- Input a valid supervisor PIN and press **#** or present valid supervisor card
- Press and hold ***** until beeping stops
- Enter slot number to be cleared and press **#** (example: to clear slot 6 type 006 **#**)
- Enter slot number to be cleared again and press **#** (example: to clear slot 6 type 006 **#**)

See programming guide included with optional **LOCKVIEW®** software for advanced programming instructions.





AC ADAPTER

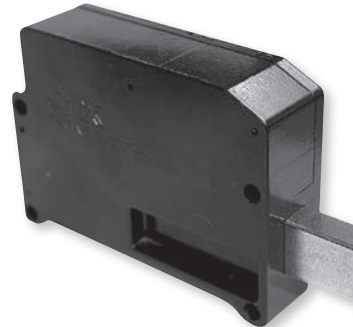
Part Numbers:
EL-2004-9VWB
(for use with the CompX eLock kit)

EL-2004-ACWB
(for use with 12V electric strikes)



MIN-ELATCH

Part Number:
EL-LATCH-SM



MOTORIZED LATCH*

Part Number:
EL-LATCH-3



TORX HEAD DRIVER FOR FRIG KIT

(Torx head bit also available)

Part Number:
EL-DRV-15



LATCH CABLE* 24"

Part Number:
EL-2004-LC



RJ 11 EXTENSION KIT, 4"

Part Number:
EL-2004-RJ KIT



HID® PROX USER, SUPERVISOR CARD

Part Number:
EL-2004-PC (no logo)
EL-2004-PC-S (CSP logo)



MAGSTRIPE USER, SUPERVISOR CARD

Part Number:
EL-2004-MSC (no logo)
EL-2004-MSC-S (CSP logo)



LOCKVIEW® SOFTWARE KIT

(provided with 7ft., 6-pin RJ11 cable,
1-USB dongle, 1 LockView® CD)

Part Number:
EL-LOCKVIEW-3



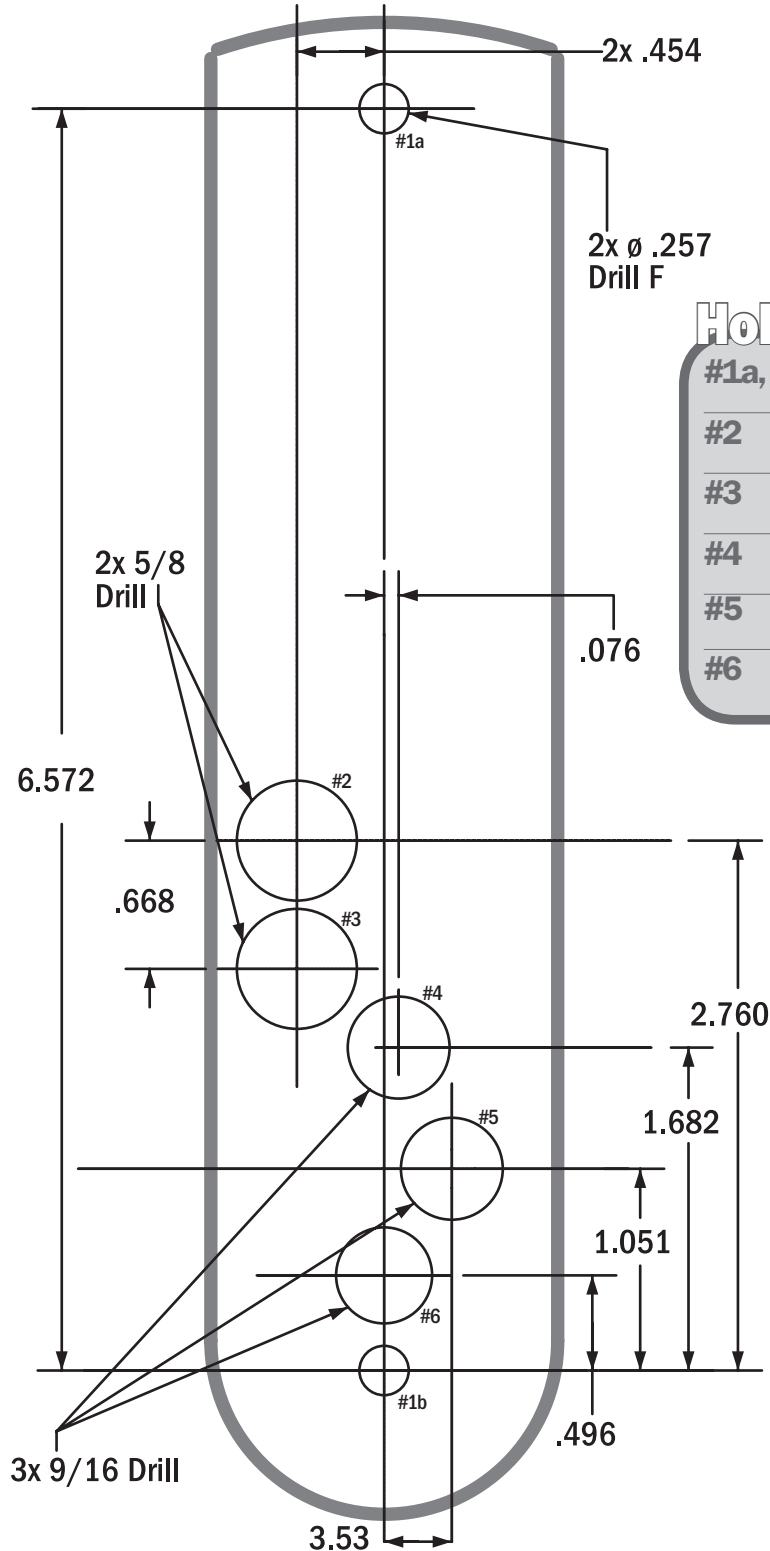
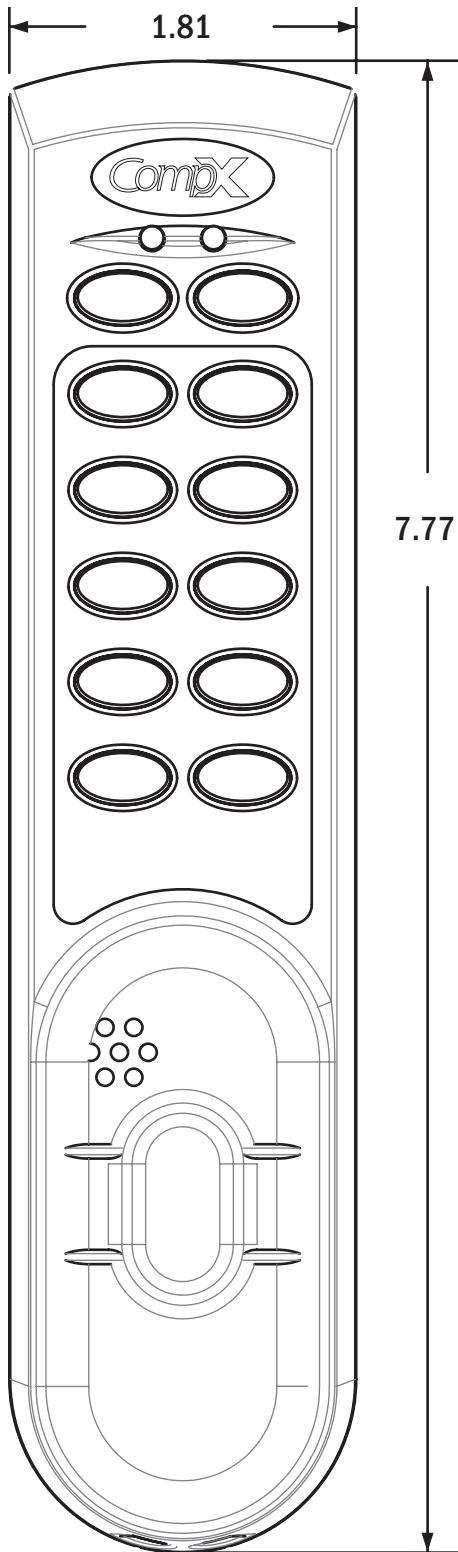
HID® PROX TAG

Part Number:
EL-2004-PT

**TEMPLATE ON
OPPOSITE PAGE**

CompX eLock[®] Surface Mounting

Use the diagrams below as a template for holes to be drilled and for mounting your CompX eLock.[®] Put this template on the **outside** of the cabinet door where the eLock will go, and you can drill right through it to mount your CompX eLock.



NOTE: 
Don't forget to fill out and return your **WARRANTY CARD!**

Hole-Function

- | | |
|--------|---|
| #1a, b | Mounting Holes
<i>required</i> |
| #2 | Battery Latch Cable
<i>required</i> |
| #3 | Alarm
<i>optional</i> |
| #4 | Battery Cable*
<i>optional</i> |
| #5 | RJ11 Port
<i>required only if using LockView</i> |
| #6 | AC Wall Adapter*
<i>optional</i> |

* If you're using a battery cable, then a wall adapter is not required. If you're using a wall adapter, then battery cable is not required.

1"

WARNING: Print this page and measure the line above. It is **ONE INCH LONG**. If it measures less than or more than one inch, the template measurements also need to be scaled accordingly.

FAILURE TO DO SO COULD RESULT IN MISDRILLED HOLES.

Recommended Cabinet Cutout Pattern

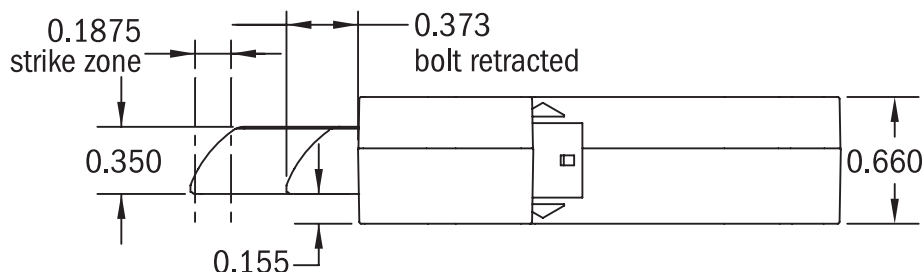
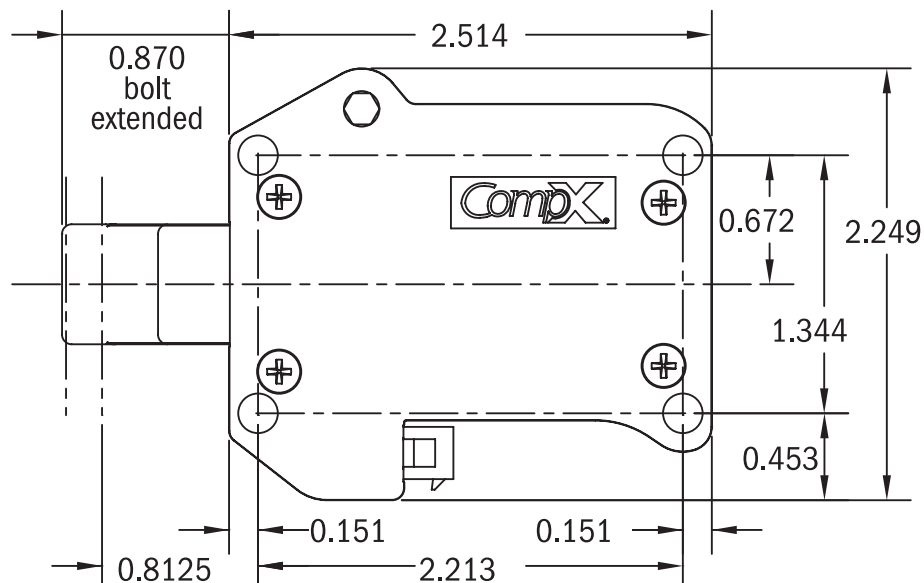
CompX eLock® Latch Dimensions *CompX eLock*®

Use the diagrams below as a template for holes to be drilled and for mounting your CompX eLock® latch. Put this template on the inside of the cabinet door where the latch will go, and you can drill right through it to mount your CompX eLock® latch.

1"

WARNING: Print this page and measure the line above. It is **ONE INCH LONG**. If it measures less than or more than one inch, the template measurements also need to be scaled accordingly.

**FAILURE TO DO SO
COULD RESULT IN
MISDRILLED HOLES.**



LockView® Software

- Add, edit, view and delete users / supervisors and their credentials
- Add, edit and delete CompX eLocks®
- Assign access rights between users / supervisors and CompX eLocks® in the database
- USB connection required
- Download, view, save, print, archive and delete audit trails
- Dual credential access available
- Set real time clock
- Time based access restrictions
- Create user groups
- Windows™ based

LockView is a Registered Trademark of CompX International. Windows is a trademark of the Microsoft Corporation. Specifications may vary based on user application.



**TEMPLATE ON
OPPOSITE PAGE**

These stickers are included with each CompX eLock® unit. Please review the information and keep the stickers in a safe location as they may be needed to reset or identify a specific eLock unit. The codes shown here are not real codes. They are representations of what the stickers will look like.



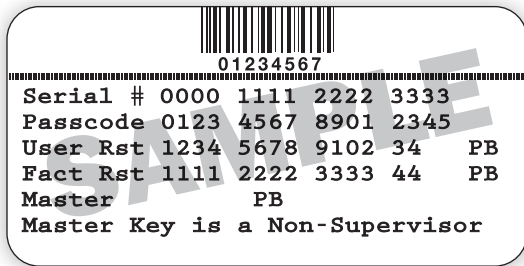
Sticker #1

2d bar code. Provides the same information as sticker number three, but a 2d laser scanner is needed to decode the information.



Sticker #2

1d bar code. Place this sticker on or around the CompX eLock® unit to help identify which codes to use if resetting the lock is necessary.



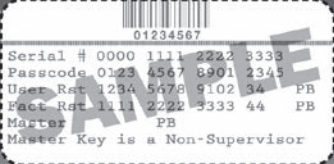
Sticker #3

Keep this sticker in a safe location.

- Serial #:** Needed to identify CompX eLock® units
- Passcode:** Unique to lock. Needed for LockView. Prevents unauthorized LockView use
- User Rst:** Allows administrator or owner to erase all user codes from eLock unit but keep supervisor codes
- Fact Rst:** Erases all codes from eLock, including settings. eLock unit will need to be set up again after a Factory Reset

CompX eLock® Warranty Card

Copyright 2007 © CompX Security Products



Serial # 0000 1111 2222 3333
 Passcode 0123 4567 8901 2345
 User Res 1234 5678 9102 34 PB
 Fact Res 1111 2222 3333 44 PB
 Master Key is a Non-Supervisor

There should be two (2) identical stickers in the box with CompX eLock®. Keep one in a secure location, and affix the other sticker in the marked area above. The codes may be needed to reset or identify a specific eLock unit.

To request a product demonstration, or for more information, call **864-297-6655** or visit our website.

<http://compX.com/products-elock.html>

PLACE
STAMP
HERE

CompX eLock
 Product Warranty / Registration
 715 Center Street
 Grayslake, IL 60030

Sticker #3 →

Affix one copy of sticker #3 (see page 7) to the CompX eLock® registration card and return to CompX Fort at address shown on the registration card.

NOTE: 
 Don't forget to fill out and return your **WARRANTY CARD!**

CompX eLock® Registration

Date of purchase		Purchase price (before tax)		Model		Serial #	
Pass Code				User Reset Code		Factory Reset Code	
Place of purchase			City		State		
Can we use your info for future advertising and promotions? <input type="checkbox"/> Yes, you can use my email / info for future advertising and promotions <input type="checkbox"/> No, you cannot use my email / info for future advertising and promotions							
First Name		MI	Last Name				
Address				Suite	Telephone (include area code)		
City		State		Primary use of product (please check all that apply) <input type="checkbox"/> Pharmacy <input type="checkbox"/> Restaurant/Bar <input type="checkbox"/> Locker <input type="checkbox"/> Refrigerator <input type="checkbox"/> School <input type="checkbox"/> Safe <input type="checkbox"/> Cabinet <input type="checkbox"/> Freezer <input type="checkbox"/> Hospital <input type="checkbox"/> Door <input type="checkbox"/> Other _____			
Email			Zip code				

CompX eLock Fill out and return this card to CompX Fort:
 715 Center Street
 Grayslake, IL 60030



TECHNICAL HOTLINE
847-752-2525
 M-F: 8 a.m. - 5 p.m. Central

864.297.6655
compXelock.com
elock@compX.com
 PO Box 200
 Mauldin, SC 29662